

Intermixed companion planting as a defence against flea beetle in forage Brassicas

(NOT cabbage stem flea beetle)

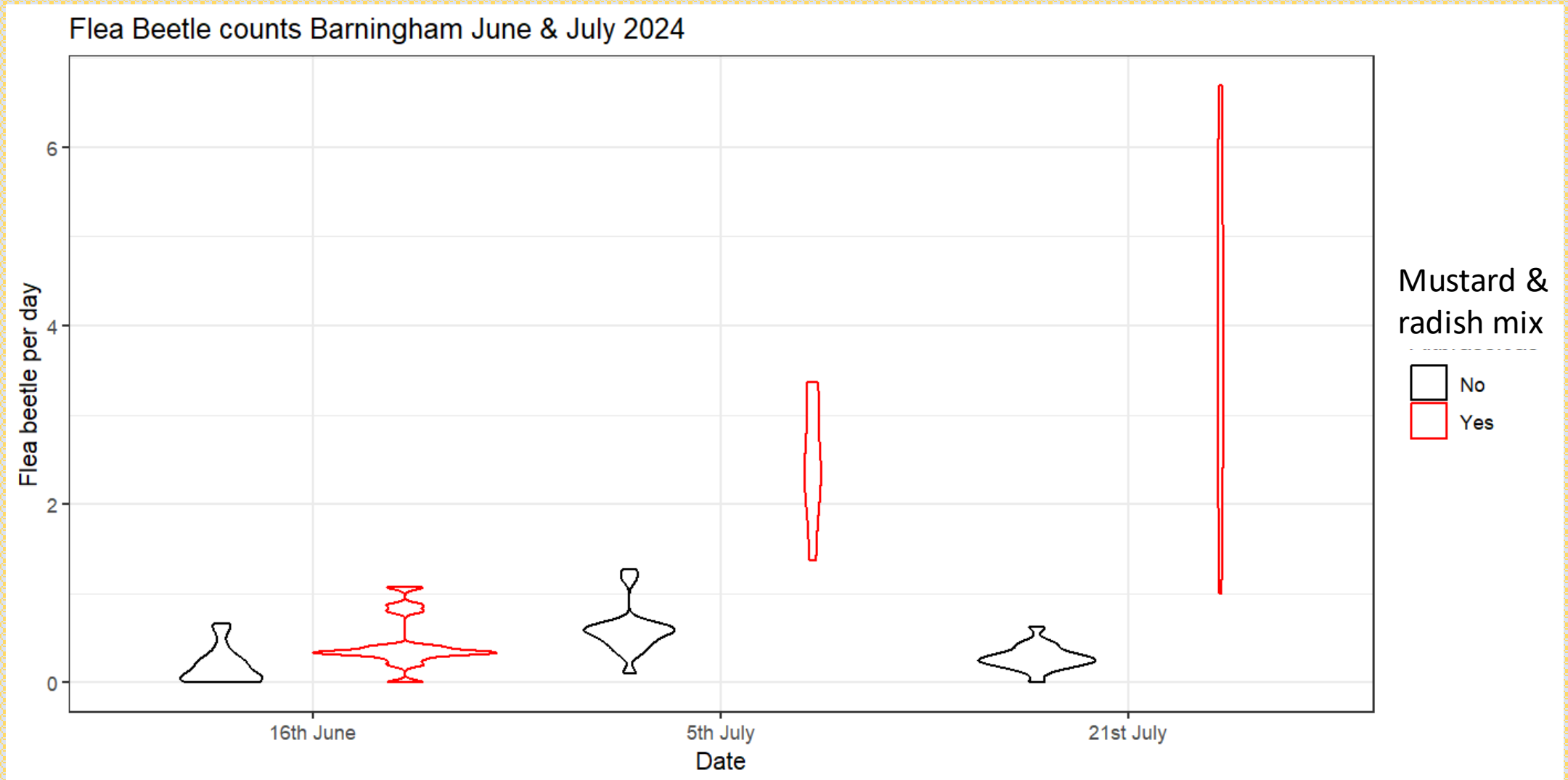
Paul Allison

SNES, Newcastle University.
& Low Harperley Farm, Weardale.

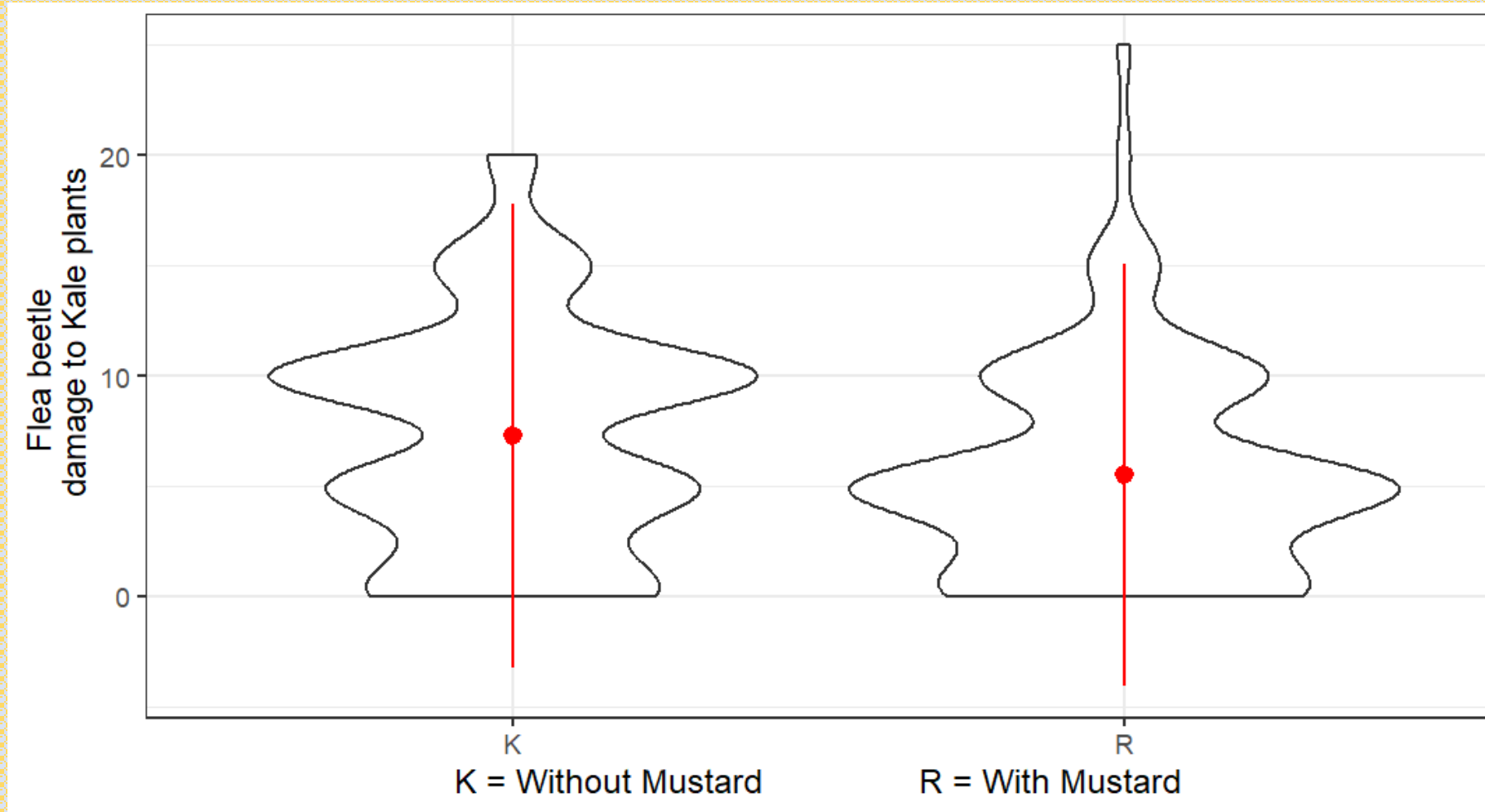
Young cattle strip grazing Kale



Flea beetle concentrate in subplots that contain brown mustard & radishes

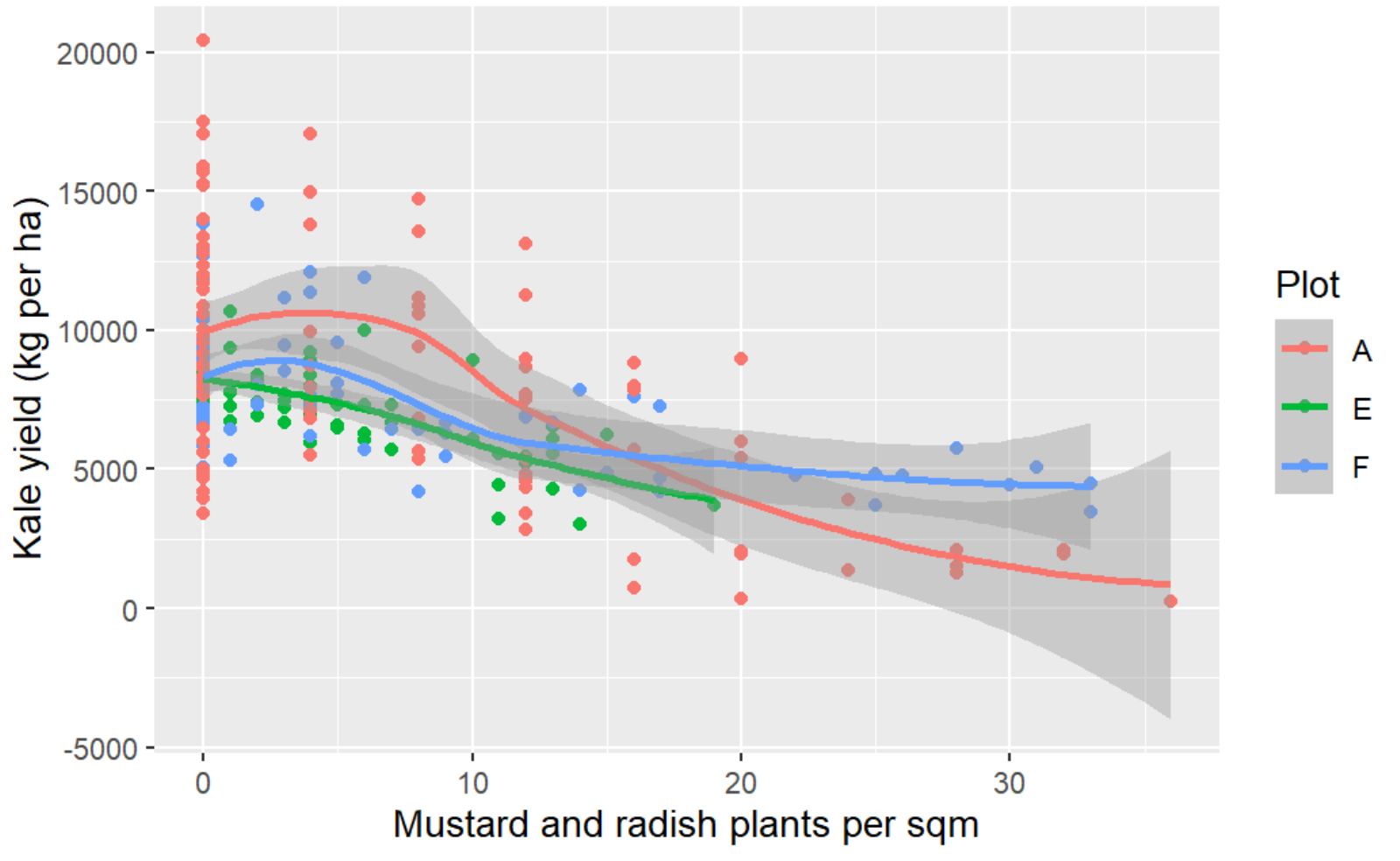


Flea beetle do less damage to Kale in presence of Mustard & Radish



Kale yield effects

Effect of Mustard & Radish plants on Kale yield (split by Plot)
October November 2024



Thanks to

- Tanya.
- Alan Cowan, who first told me about flea beetle loving radishes.
- Harry Hodgson, Stephen Comber, Matthew Tile and James Standen, who let me mess around on their farms.
- Mark Whittingham, Gavin Stewart and Julia Cooper for taking me on.
- Dave George for pointing out that flea beetle are small, not far away.