

What IWM strategies / tactics are UK arable farmers employing for weed control

Richard Hull
Rothamsted Research



Overview

The objective was to develop an understanding of the following by conducting interviews with UK arable farmers:

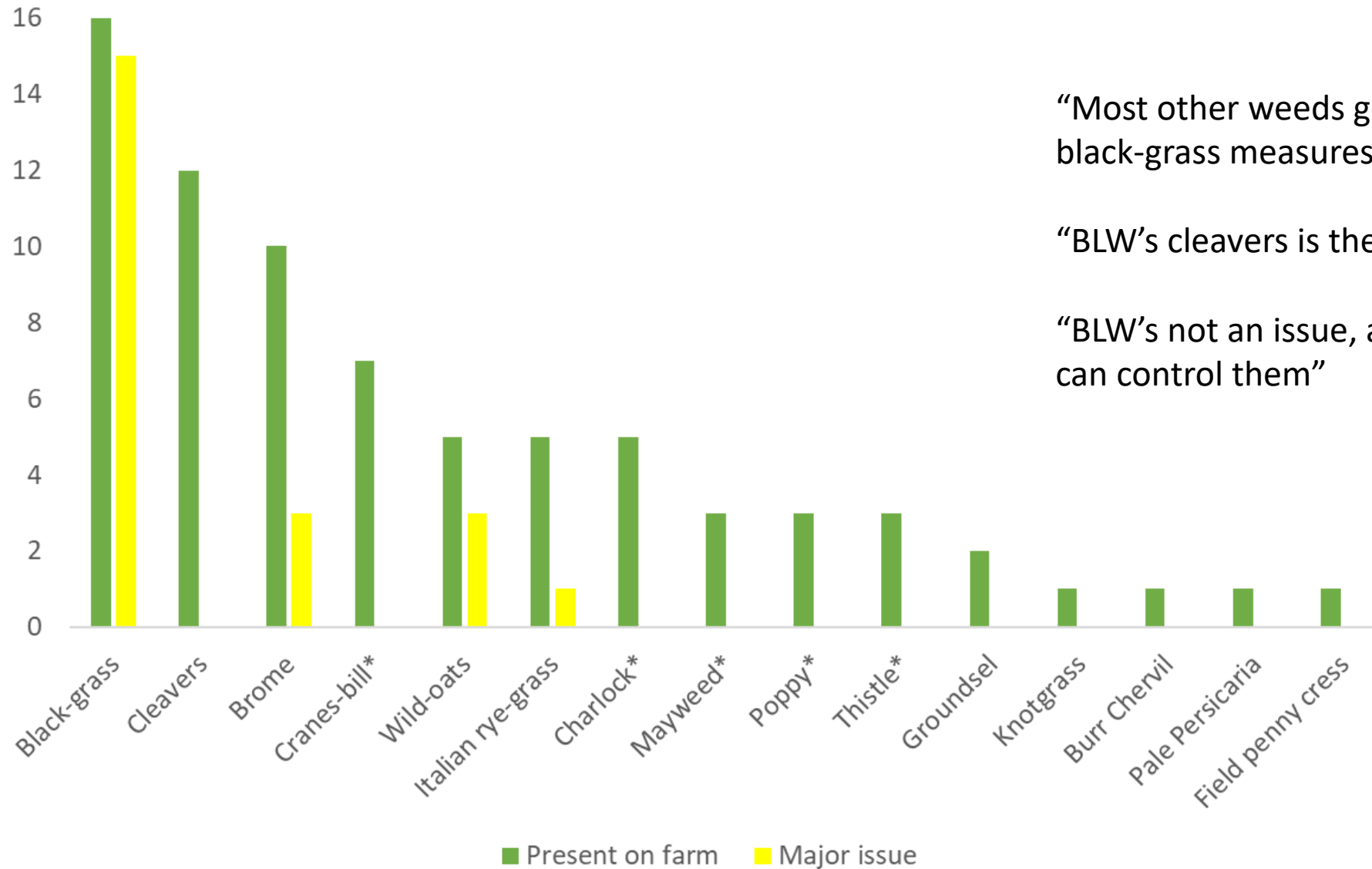
- what are the problem weeds
- strategies / tactics being employed
- drivers for decision making
- barriers to uptake of IWM
- where knowledge is gained / trusted



Interview protocol

- The same protocol / questions was used across all participating countries and cropping systems
- 4 sections:
 1. Farmer / farm details (size, ownership, problem weeds)
 2. What they do on there farm to control the weeds they have
 3. Factors that affect the decision making process
 4. Where they access information to make weed control choices
- Tried to avoid leading questions as much as possible
- Interviews recorded and then transcribed

What are the main weed issues?

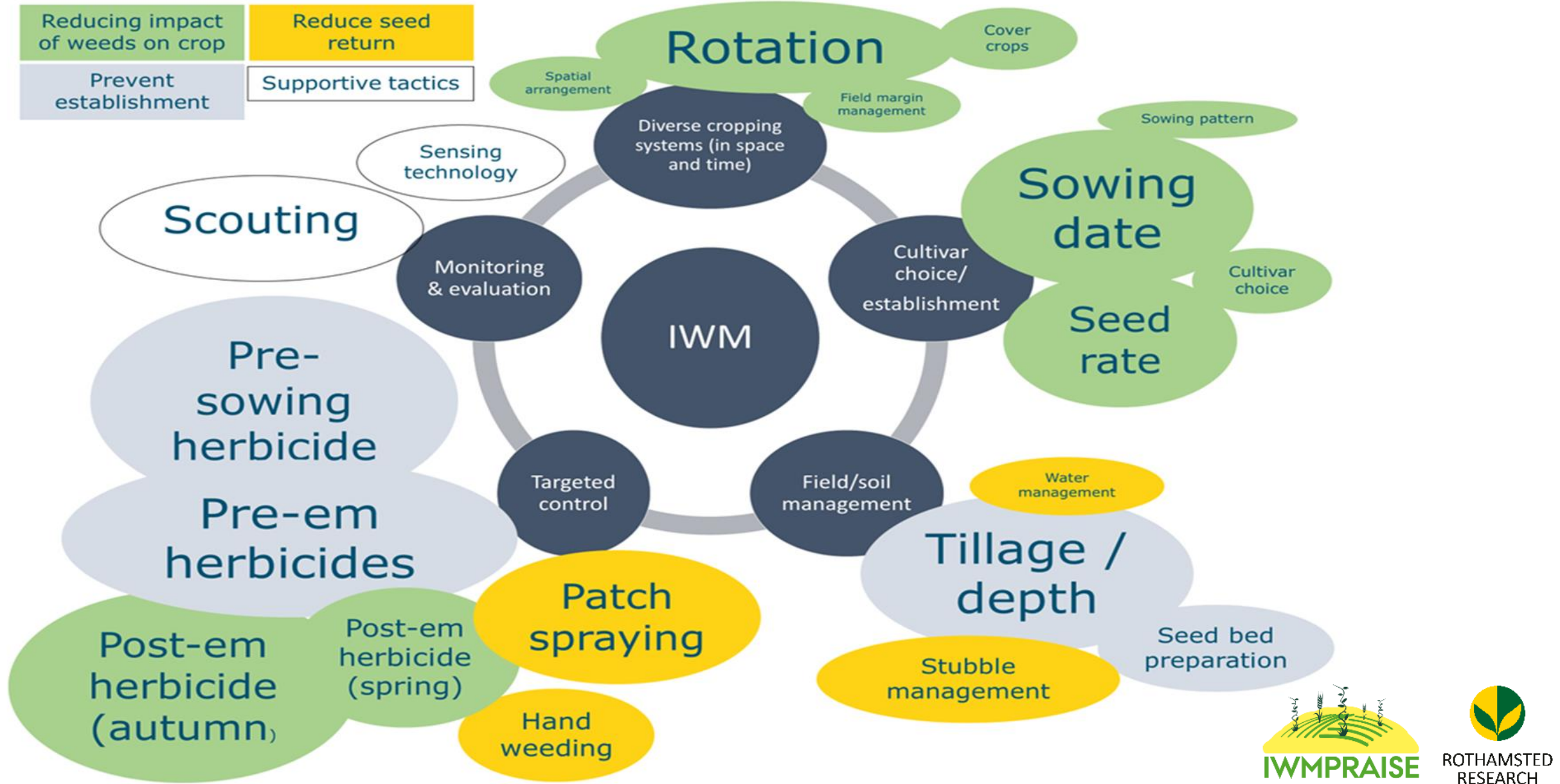


“Most other weeds get controlled by black-grass measures”

“BLW’s cleavers is the main target”

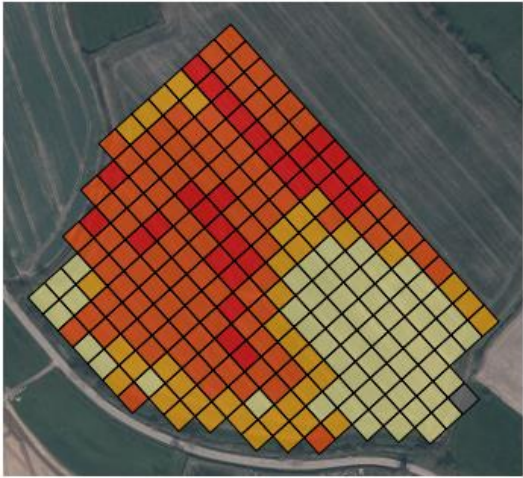
“BLW’s not an issue, always there but can control them”

What farmers are doing for weed control?

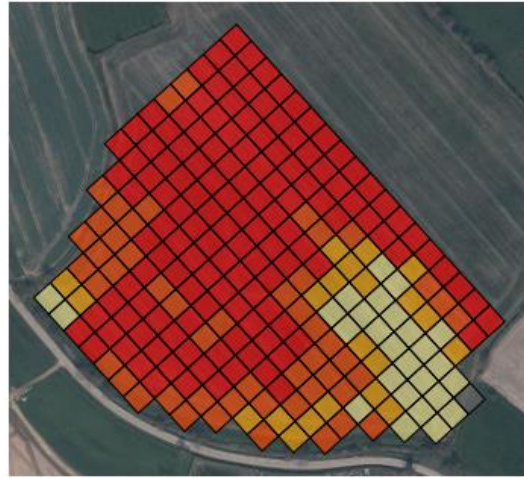


Monitoring black-grass abundance

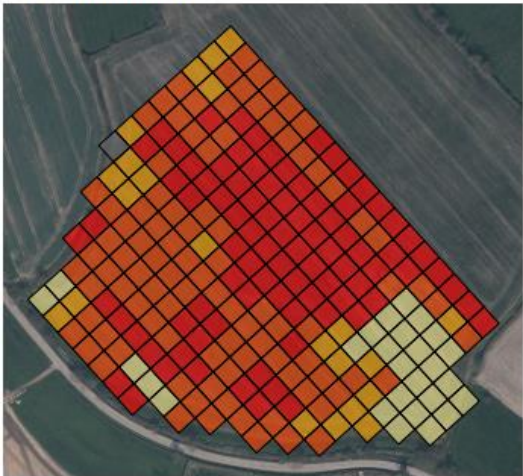
buckleys: 2014
Crop: Winter wheat



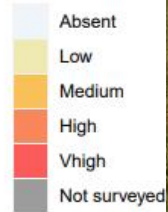
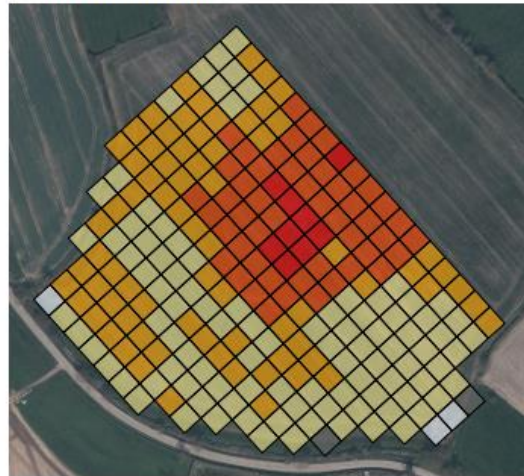
buckleys: 2016
Crop: Winter wheat



buckleys: 2018
Crop: Winter wheat

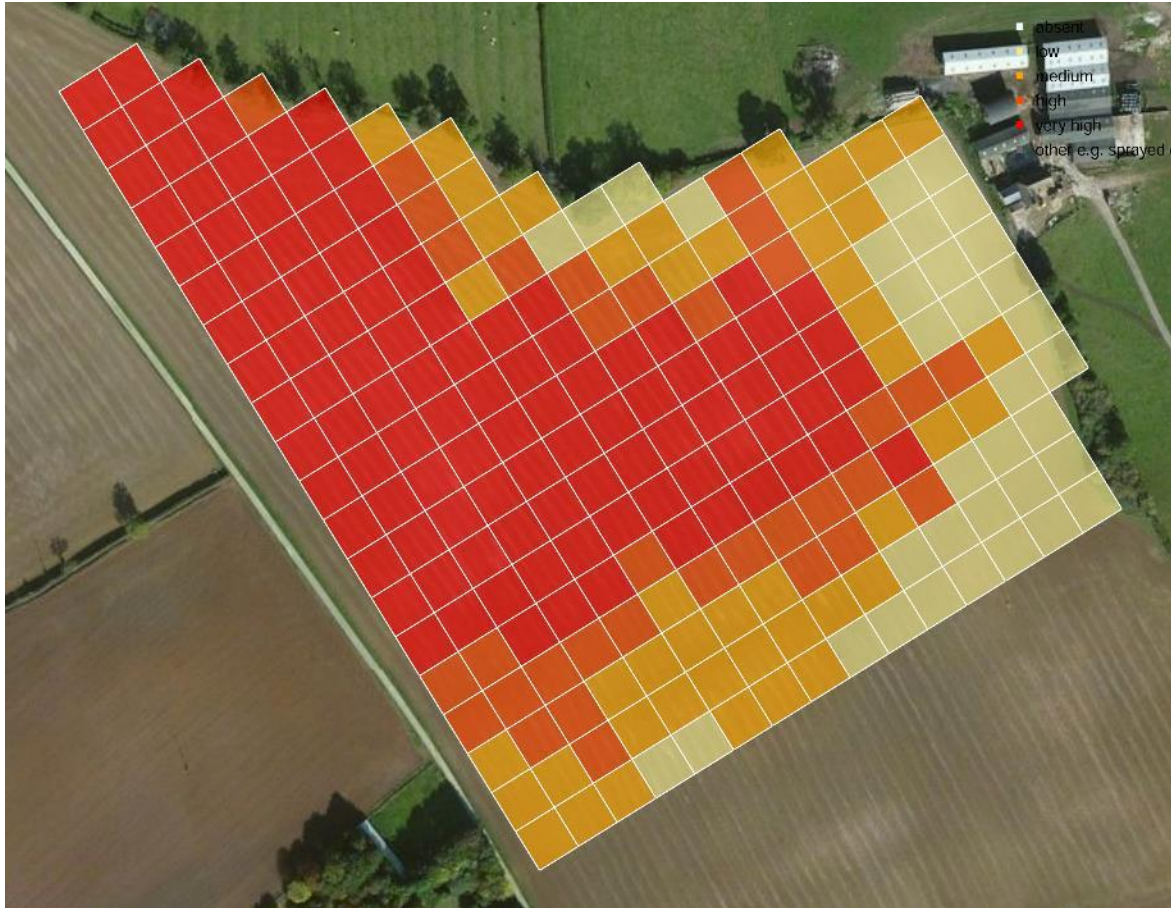


buckleys: 2019
Crop: Winter wheat

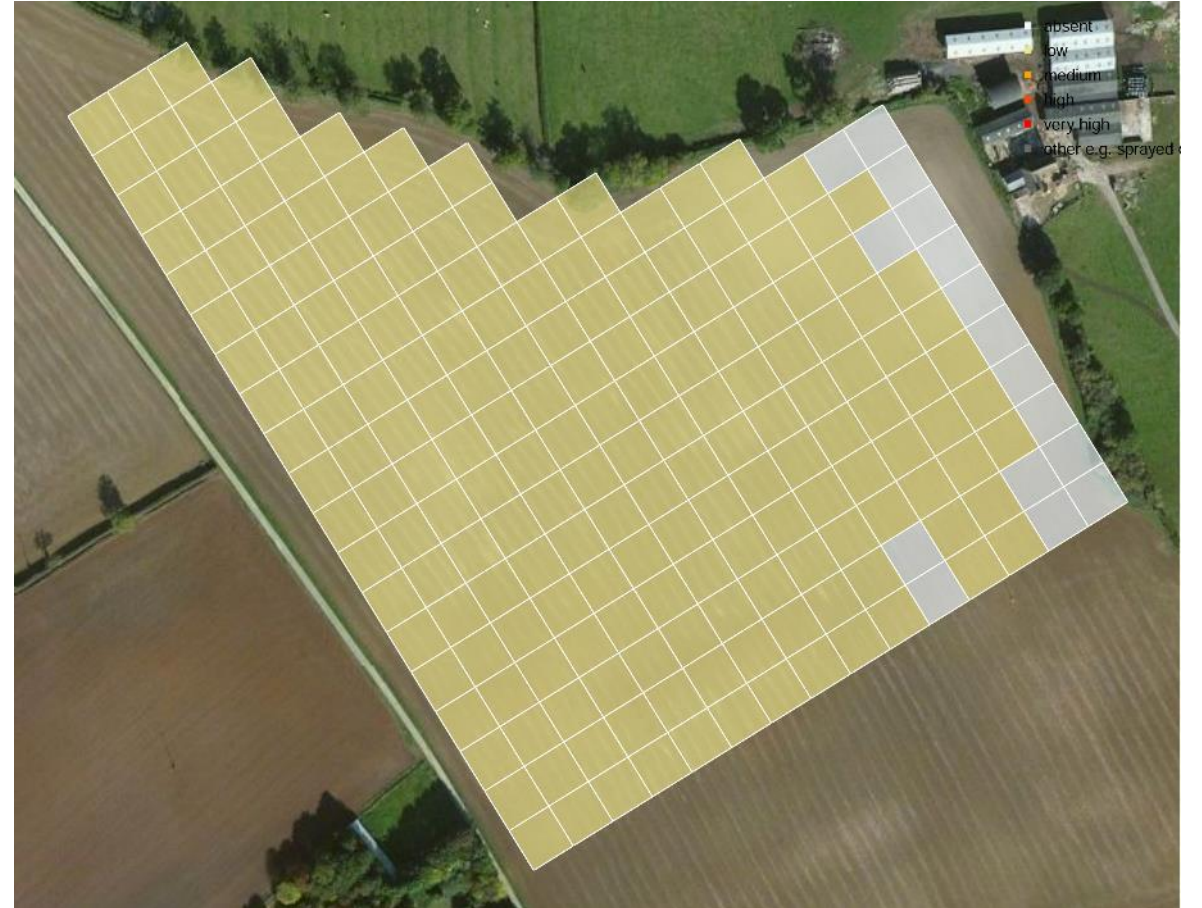


Monitoring black-grass abundance

2014



2018



Monitoring black-grass abundance

2014



2018



Monitoring black-grass abundance

Un-treated:

Flufenacet treated:

Monitoring black-grass abundance

moulsoe.cross: 2015

Crop: Winter wheat



moulsoe.cross: 2016

Crop: Winter wheat



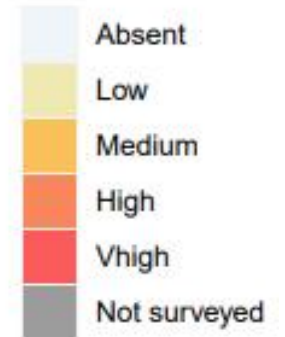
moulsoe.cross: 2018

Crop: Winter wheat



moulsoe.cross: 2019

Crop: Winter wheat



big.boxhedge: 2014
Crop: Winter wheat



big.boxhedge: 2015
Crop: Spring barley



big.boxhedge: 2017
Crop: Winter wheat



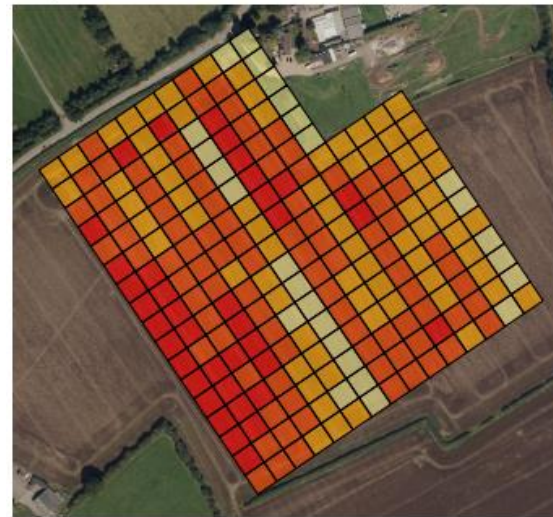
big.boxhedge: 2018
Crop: Winter barley



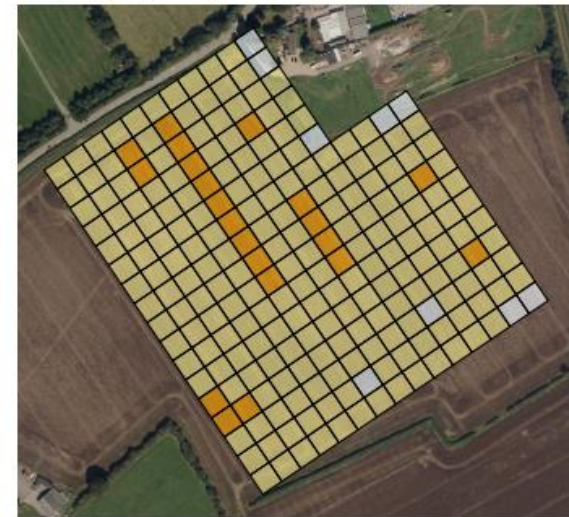
big.boxhedge: 2020
Crop: Winter wheat



mushroom.field: 2014
Crop: Winter wheat



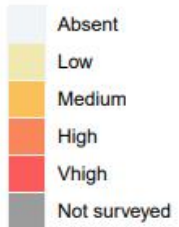
mushroom.field: 2015
Crop: Spring barley



mushroom.field: 2017
Crop: Winter wheat



mushroom.field: 2020
Crop: Spring barley



Diversity / flexibility is key to sustainable weed control

Rotations / cropping

Drilling dates

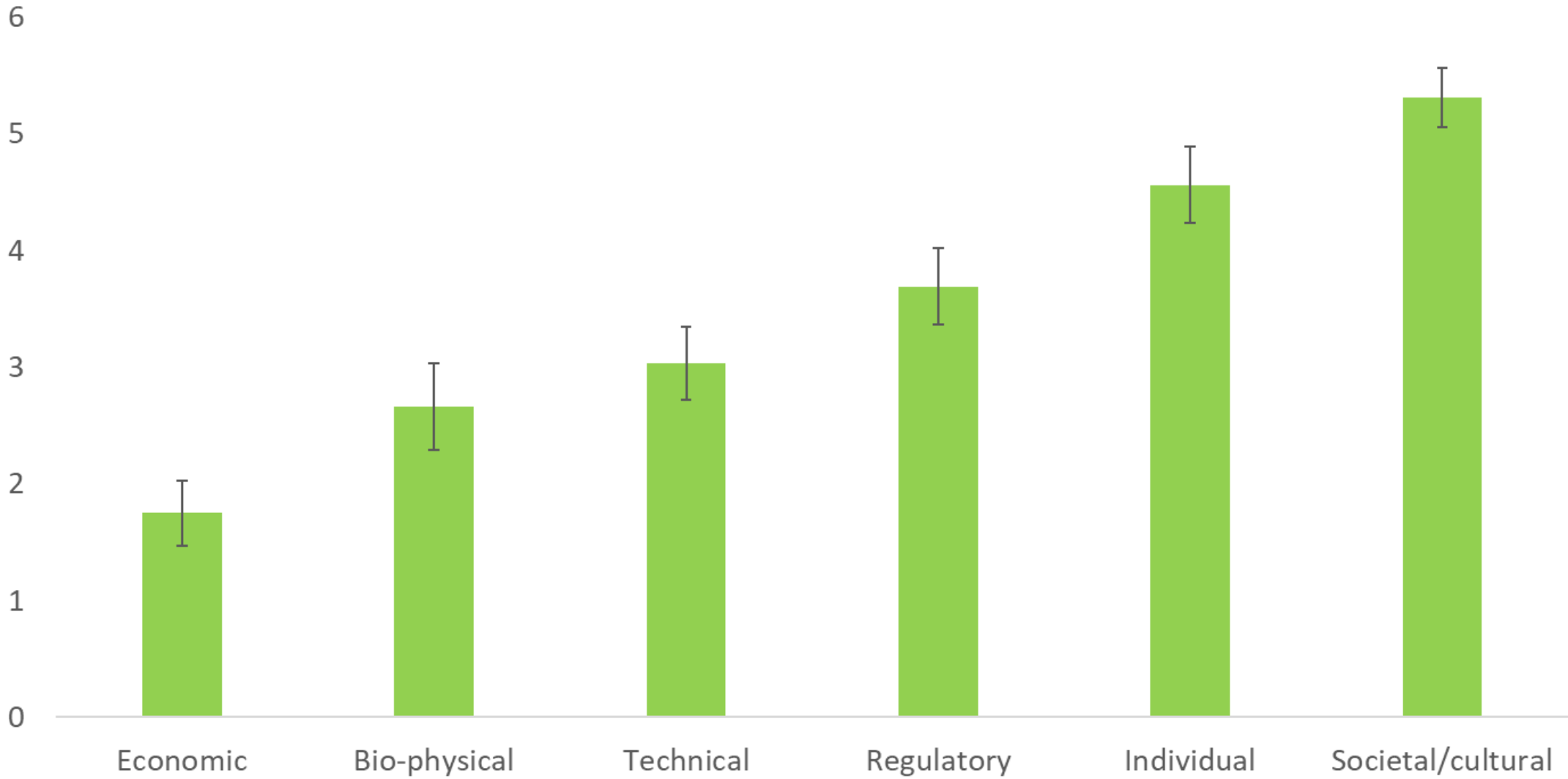
Cultivations

Herbicides

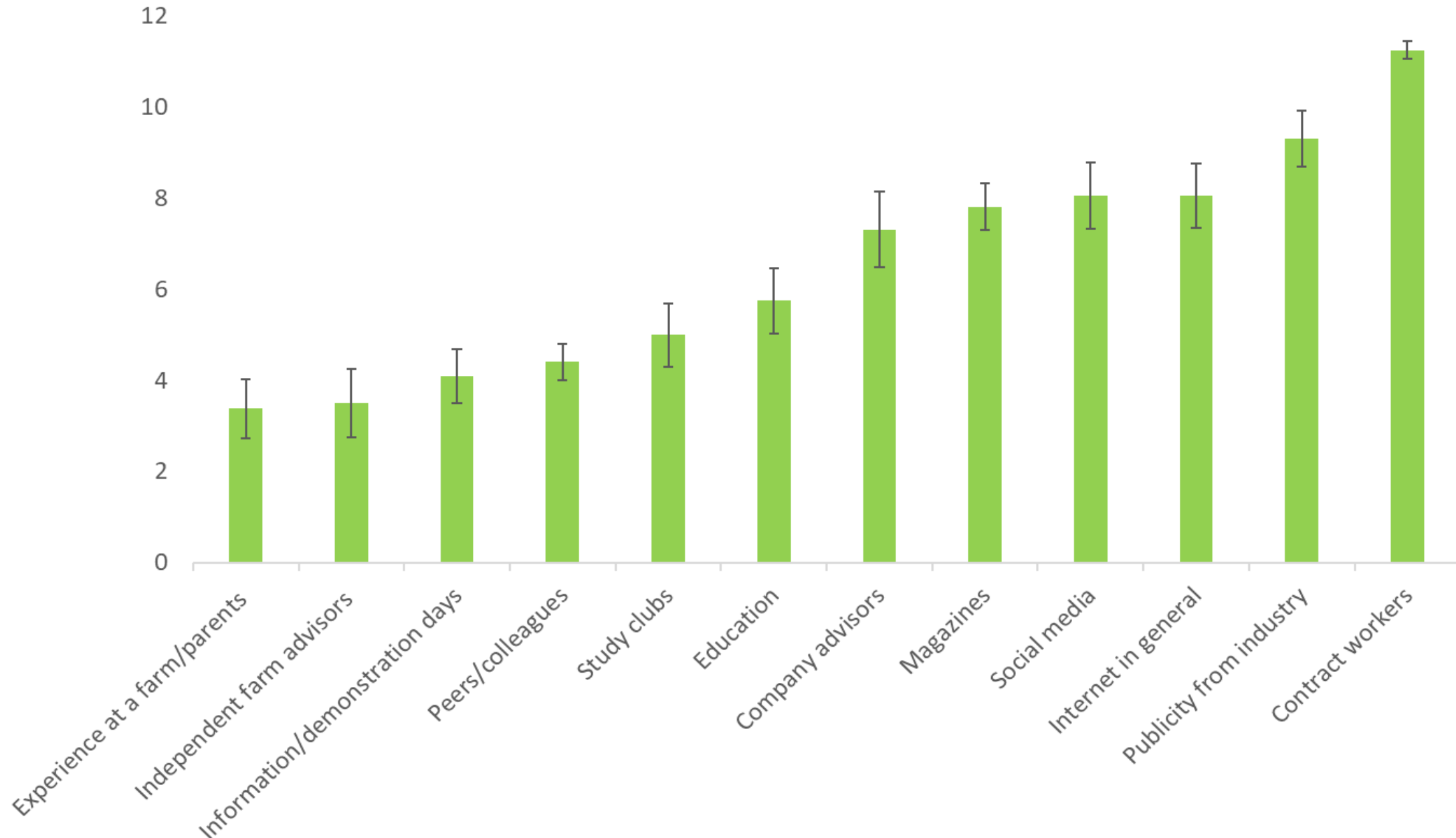
Monitoring



What factors affect farmers decision making



Information sources for farmers



Summary

- Diversity & flexibility key to IWM
- Monitor success of tactics employed
- Will IWM changes affect profitability
- Use sources / places of information that you trust

